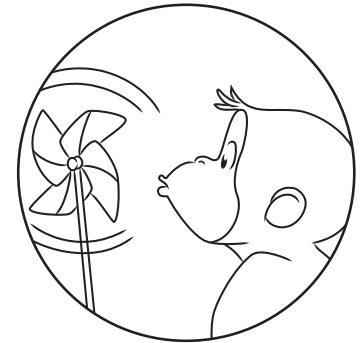


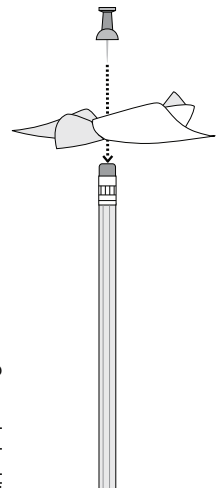
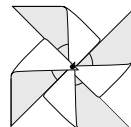
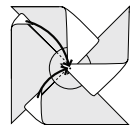
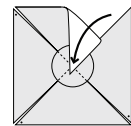
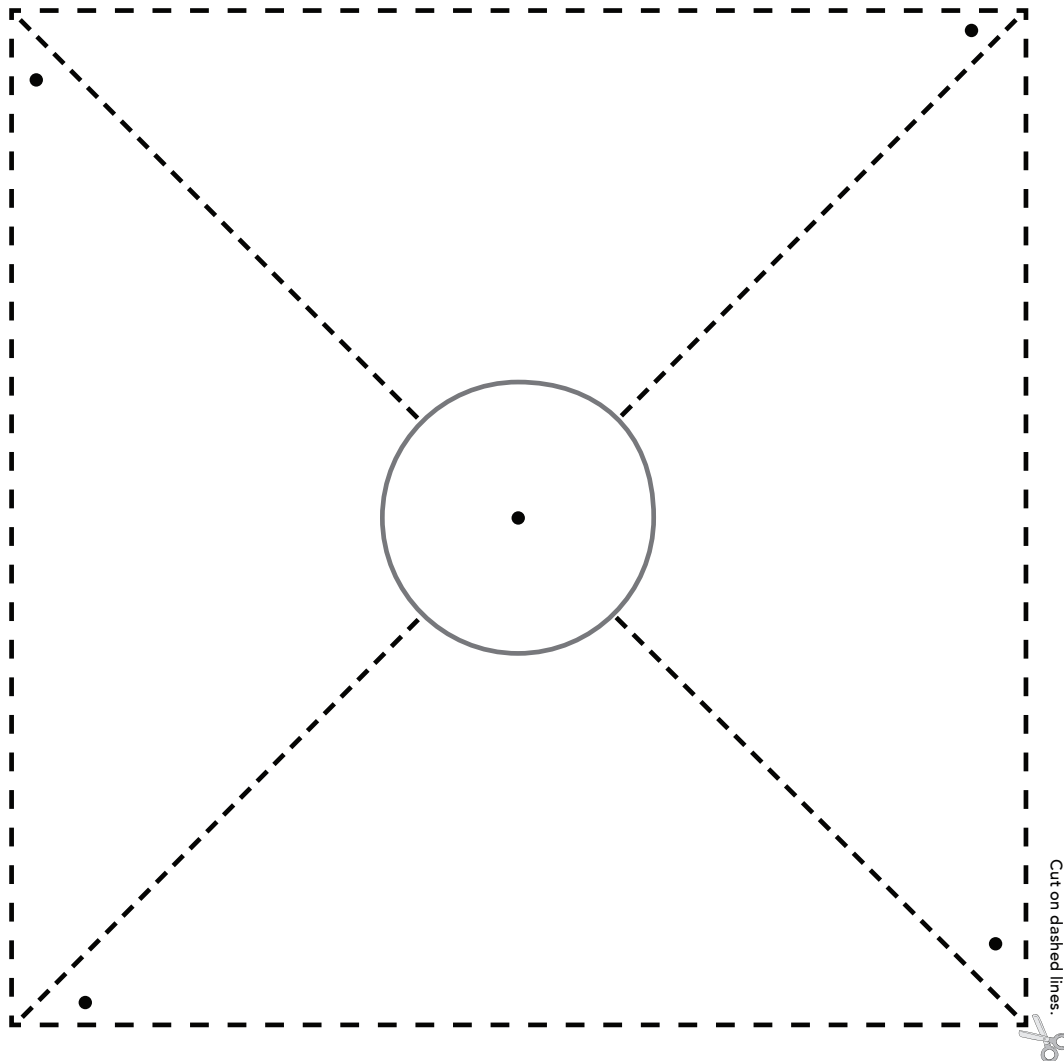
Make a Pinwheel

You need: , a , a  and maybe an adult to help.

1. Color the pinwheel and the blank back of this sheet.
2. Cut out the pinwheel. Then cut along the diagonal, dashed lines.
3. Use the pushpin to poke holes in the center of the pinwheel and in the four corners. Twist the pin to make the holes smooth. This will help your pinwheel spin.
4. Stick the pushpin through each of the corner holes, through the center hole, then into the top of the pencil eraser. (See drawing.)
5. Blow your pinwheel. Watch it spin! Ask: What do you notice? What is making the pinwheel spin? How else can you make it spin?



Curious George[®]



Cut on dashed lines.

Watch Curious George on PBS KIDS and explore pbskids.org/curiousgeorge for online fun and games!

Find more games and activities at pbsparents.org/outdoors